

LCM SERIES

INTERIOR / EXTERIOR
Lighting Control System

Contactor Expansion Panels

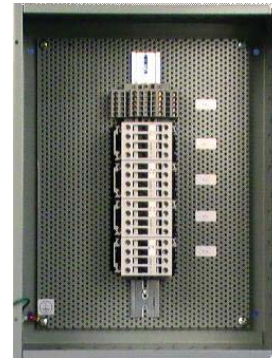
XPS

Small Contactor Expansion Panel

The hinged cover NEMA-1 type enclosure includes a terminal block and DIN rail capable mounting a maximum of four 4- or 8- pole contactors.

Dimensions

16"H x 12"W x 6"D



XPL

Large Contactor Expansion Panel

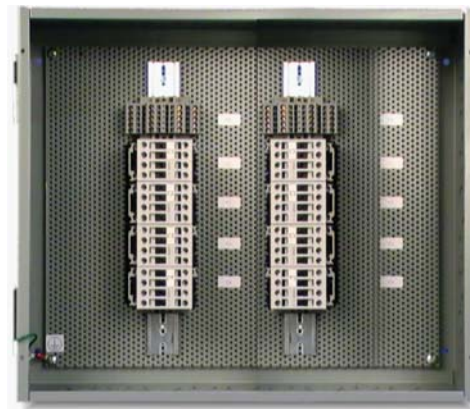
The hinged cover NEMA-1 type enclosure includes a terminal block and DIN rail capable mounting a maximum of six 4- or 8- pole contactors.

Dimensions

18"H x 18"W x 6"D

Features

- Various sizes of easily removable concentric knockouts on all four sides
- 16 gauge steel
- Butt hinges
- Mounting holes on back of box
- Provisions for grounding



Finish

ANSI 61 gray polyester powder paint finish inside and out over phosphatized surfaces.



Enclosures

NEMA3RS / NEMA3RL
NEMA-3R Rain Tight: Outdoor rain resistant enclosure

Designed to provide protection for outdoor installations against rain, sleet, and snow, or indoors against dripping water.

Dimensions

NEMA3RS (Small) 16" H x 12" W x 6" D
NEMA3RL (Large) 18" H x 18" W x 6" D

Features

- Drip-shield top and seam-free sides, front, and back protect from rain, snow, or sleet
- Plated steel continuous hinge has stainless steel pin
- Collar studs provided for mounting optional panels
- 16 gauge galvanized steel
- Provisions for padlocking
- No gasketing or knockouts (except knockouts on bottom of small enclosure)

Finish

ANSI 61 gray polyester powder paint finish inside and out over galvanized steel.



NEMA4XS / NEMA4XL
NEMA-4X Water Tight / Corrosion Resistant: 304 Stainless steel wash down and corrosion resistant

Designed to provide protection in highly corrosive environments. This enclosure is used in indoor and outdoor settings that are frequently wet or have constant exposure to water, other liquids, or contaminants.

Dimensions

NEMA4XS (Small) 16" H x 12" W x 6" D
NEMA4XL (Large) 20" H x 20" W x 6" D

Features

- 16 or 14 gauge steel
- Seams continuously welded and ground smooth, no holes or knockouts
- External wall-mounting brackets are 14 gauge steel
- Return flanges exclude liquids and contaminants
- Stainless steel door clamps on three sides of door for watertight seal
- Removable heavy gauge stainless steel continuous hinge pin
- Hasp and staple provided for padlocking
- Data pocket is high-impact thermoplastic



LCM SERIES

INTERIOR / EXTERIOR
Lighting Control System

Enclosures (continued)

NEMA4XS / NEMA4XL (continued)

NEMA-4X Water Tight / Corrosion Resistant: 304 Stainless steel wash down and corrosion resistant

Features (continued)

- Collar studs provided for mounting optional panels
- Bonding provision on door. Grounding stud on body
- Seamless foam-in-place gasket assures watertight and dust tight seal
- Rolled lip around 3 sides of door & all sides of enclosure opening excludes liquids & contaminants

Finish

Enclosures are unpainted. Door, sides, top, and bottom have smooth #4 brushed finish. Optional mild steel panels are painted white. Optional conductive and stainless steel panels are available.

NEMA12S / NEMA12L

NEMA-12 Oil Tight: Used in industrial areas where cutting oils or other non corrosive mists are found in the environment

Designed for indoor use in protecting components from dust, dirt, oil, and water.

Dimensions

NEMA12S (Small)	16" H x 12" W x 6" D
NEMA12L (Large)	20" H x 20" W x 6" D

Features

- Enclosure bodies are either 14 or 16 gauge steel. All doors are 14 gauge steel
- Seams continuously welded and ground smooth; no holes or knockouts
- External wall-mounting brackets are 14 gauge steel
- Return flanges around three sides of door and all sides of enclosure opening exclude liquids and contaminants
- Door clamps are quick and easy to operate
- Removable heavy-gauge continuous hinge pin
- Hasp and staple for padlocking
- Data pocket is high-impact thermoplastic
- Collar studs provided for mounting optional panels
- Bonding provision on door
- Optional panels are 12 gauge steel

Finish

White inside with ANSI 61 gray outside finish over phosphatized surfaces. Optional panels have white or conductive finish.



Panel Heater

**PHR
Panel Heater**

Used in outdoor enclosures to fight condensation and maintain operating temperatures. The PHR panel heater is a silicone flexible heater that can detect internal temperature and is corrosion resistant. UR, cUR, VDE approved, easy to bond, fiberglass reinforced and lightweight.

Power Requirements and Output

<i>Temperature:</i>	<i>32o to 40oF</i>
<i>AC Voltage Required:</i>	<i>120V</i>
<i>Electric Demand:</i>	<i>0.05kW</i>
<i>Watt Density:</i>	<i>80.00W/in²</i>
<i>Dimensions:</i>	<i>5"L x 2"W</i>



LCM SERIES

**INTERIOR / EXTERIOR
Lighting Control System**

Load Switching

OP4 4-Pole Normally-Open Contactor / 20A / 120V Coil

Electrically held contactor poles are open in de-energized state 20A 600VAC

Control Output: None

Power Output: 600V 50/60Hz 4-pole isolated normally-open (NO) contacts
20A (Lighting)
30A (General Purpose / Ballast)

Wiring: #16 to 10 AWG 75 Degree copper only

Dimensions: 1.77"W x 3.07"H x 2.90"D



OP8 8-Pole Normally-Open Contactor / 20A / 120V Coil

Electrically held contactor poles are open in de-energized state 20A 600VAC

Control Output: None

Power Output: 600V 50/60Hz 8-pole isolated normally-open (NO) contacts
20A (Lighting)

Wiring: #16 to 10 AWG 75 Degree copper only

Dimensions: 1.77"W x 3.07"H x 3.88"D



CP4 4-Pole Normally-Closed Contactor / 20A / 120V Coil

Electrically held contactor poles are closed in de-energized state 20A 600VAC

Control Output: None

Power Output: 600V 50/60Hz 4 pole isolated normally-closed (NC) contacts
20A (Lighting)

Wiring: #16 to 10 AWG 75 Degree copper only

Dimensions: 1.77"W x 3.07"H x 2.90"D



Outputs

FLB
Warning beacon for HID Sweeps

Provides indication to occupants that the sweep sequence is activated and warning of lights-out status

Features

*Used with 7-day TC with sweep
Available only on LCM-BL model*



Industrial Remote Switching

ROT2
Remote Override Time Pushbutton

Allows remote override or extension of condition. The switch is of rugged industrial grade quality. The covers and frames are metals and available in several finishes.

IROT2
Illuminated Remote Override Time Pushbutton

Same as above, except illuminated pushbutton indicates that the switch is activated

Features

*Supply Voltage at 24VDC
Both remote override are flush operators
Screw clamp terminal connection.
Contact Blocks - 1 Normally-Open
Includes back box; connection wire not included*



Commercial Remote Switching

SWPB1
1-Button Remote LED Pushbutton

Allows remote override or extension of condition. LED shows output On. The switch is of rugged commercial-grade quality. The covers and frames are metals and available in several finishes.

Features

- Two-wire push button momentary switch
- Handling a range of 5VDC to 24VDC
- Available only on LCM-IE Model
- Does not include back box or connection wire

